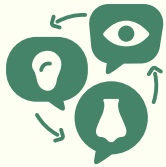


# Nature Play

## and Child Development...



**Sensory Integration**



**Neurological Development**



**Fine Motor Skills**



**Proprioception**



**Reasoning & Problem Solving**



**Gross Motor Strength**



**Temporal Awareness**



**Emotional Regulation**



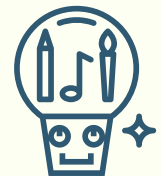
**Visual Perception & Scanning**



**Connection to Nature**



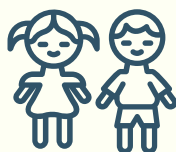
**Environmental Stewardship**



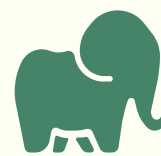
**Creativity**



**Fantasy**



**Social Interaction**



**Procedural Memory**



**Balance**



**Imagination**



**Sense of Awe & Spiritual Connection**



**Restorative Rest & Retreat**



**So Much to Learn...**